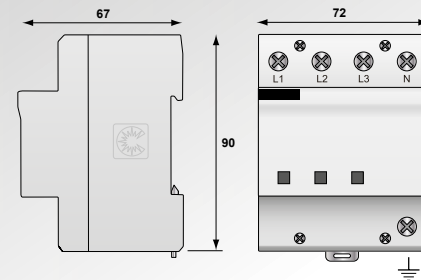


Type 1 + 2 + 3 AC Surge Protector DUT250VG-300 series

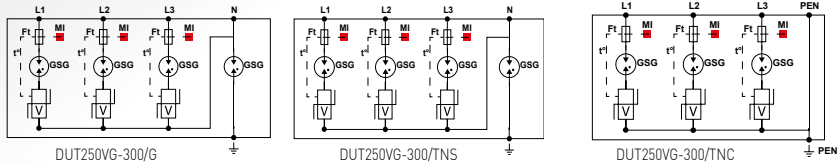


CITEL

**Iimp
25 kA**



V : High-energy varistor network
GSG : Specific gas tube
Ft : Thermal fuse
MI : Disconnection indicator



- **Type 1 + 2 + 3, 3-phase surge protector**
- **Common and Differential mode**
- **Very compact monobloc enclosure**
- **Iimp by pole/total : 25 kA/50 kA**
- **Internal disconnection, status indicator**
- **Optimized to TOV**
- **EN 61643-11, IEC 61643-11 and UL1449 ed.4 compliance**

Characteristics

CITEL Model		DUT250VG-300/G	DUT250VG-300/TNS	DUT250VG-300/TNC
Description		Type 1+2+3 AC surge protector - 3-phase+N	Type 1+2+3 AC surge protector - 3-phase+N	Type 1+2+3 AC surge protector - 3-phase
Network		230/400 V 3-phase+N	230/400 V 3-phase+N	230/400 V 3-phase
AC system		TT-TNS	TNS	TNC
Max. AC operating voltage	Uc	255 Vac	255 Vac	255 Vac
Temporary Over Voltage (TOV) Characteristics - 5 sec.	UT	335 Vac withstand	335 Vac withstand	335 Vac withstand
Temporary Over Voltage (TOV) Characteristics - 120 mn	UT	440 Vac withstand	440 Vac withstand	440 Vac withstand
Temporary Over Voltage N/PE (TOV HT)	UT	1200 V/300A/200 ms withstand	-	-
Residual current - Leakage current at Uc	Ipe	None	None	None
Follow current	If	None	None	None
Nominal discharge current - 15 x 8/20 μs impulses	In	40 kA	40 kA	40 kA
Max. discharge current - max. withstand @ 8/20 μs by pole	I _{max}	100 kA	100 kA	100 kA
Impulse current by pole - max. withstand 10/350 μs	I _{imp}	25 kA	25 kA	25 kA
Specific energy by pole	W/R	156 kJ/ohm	156 kJ/ohm	156 kJ/ohm
Total lightning current - max. total withstand @ 8/20 μs	I _{total}	50 kA	50 kA	75 kA
Withstand on Combination waveform - Class III test	Uoc	6 kV	6 kV	6 kV
Protection level @ In	Up-in	1.1 kV	1.1 kV	1.1 kV
Protection level	Up	1.5 kV	1.5 kV	1.5 kV
Admissible short-circuit current	I _{sc}	50000 A	50000 A	50000 A
Associated disconnectors				
Thermal disconnector		internal		
Fuses		Fuses type gG - 315 A		
Installation ground fault breaker		Type «S» or delayed		
Mechanical characteristics				
Dimensions		see diagram		
Connection to Network		By screw terminals : 6-35 mm ² / by bus		
Disconnection indicator		Led indicators		
Remote signaling of disconnection		none		
Mounting		Symmetrical rail 35 mm (EN60715)		
Operating temperature		-40/+85°C		
Protection rating		IP20		
Housing material		Thermoplastic UL94-V0		
Standards compliance		IEC 61643-11 / EN 61643-11 // UL1449 ed.4		
Certification		EAC		
Part number		3414	3597	3588

